



There was plenty of space in the bistro



Food portions were generous

Hotel with a buzz

The owners of the New Beehive Hotel have spent more than £850,000 on a luxurious refurbishment. **John Carter** samples the hospitality on a wedding anniversary and finds an experience fit for a king

If you are looking for somewhere with the wow factor this Valentine's Day, point your car in the direction of millionaires' paradise.

The New Beehive Hotel is discreetly tucked away in a delightful Dorset suburb just a stone's throw from Sandbanks – once ranked the fourth most expensive place to live in the world.

My wife and I celebrated our wedding anniversary at this wonderful boutique hotel and were blown away by our magical weekend.

From the moment we opened our bedroom door to discover a bouquet of red roses and a bottle of pink Champagne, we were made to feel like royalty.

You will not meet nicer people than husband and wife owners Chris and Angela Hollingworth. The hotel enjoys a secluded setting in Canford Cliffs and has been refurbished to a cost in excess of

£850,000. It has been transformed to include eight luxurious and spacious en suite bedrooms.

Each boasts a magnificent bed and 42-inch flat screen television. It may be three-star in terms of its certificate from the English Tourist Board, but it is five-star treatment all the way once you are inside.

Chris and his team treated us to sushi upon our arrival, after which we enjoyed exploring this magnificent part of the world.

Our walk down a zig-zag coastal path took us past some charming Victorian beach huts.

Bournemouth was a 10-minute walk in one direction but we opted to take the coastal path to Sandbanks

to view some of the properties the likes of Tottenham Hotspur manager Harry Redknapp call home. Imagine taking a stroll down Millionaires'

We were made to feel like royalty

Row in California and it is close to how it is in Sandbanks. Some of the breathtaking houses with grounds which stretch down to the shoreline really do have to be seen to be believed.

The walk along the stunning beach is well worth it, with views out to Poole Bay, the Isle of Wight and the Old Harry Rocks not to be missed.

Vibrant bar

Not even a light drizzle could dampen our enjoyment and we returned to the hotel with a healthy appetite.

After a pleasant drink in a vibrant bar area we were ready to tuck into our evening meal in a bistro boasting plenty of space and plenty of cosy corners for couples.

We shared a plate of nachos for a starter and I tucked into a giant rack of ribs for my main course. Accompanied by a generous portion of chips and salad, I was never going to have room for a dessert.

My wife enjoyed cod fishcakes and was determined to enjoy a banoffee cheesecake, which she devoured with relish.

Chris was able to give us a sneak preview of his Valentine's menu, which will include main courses such as salmon with sorrel sauce, beef Wellington and roasted Italian tower.

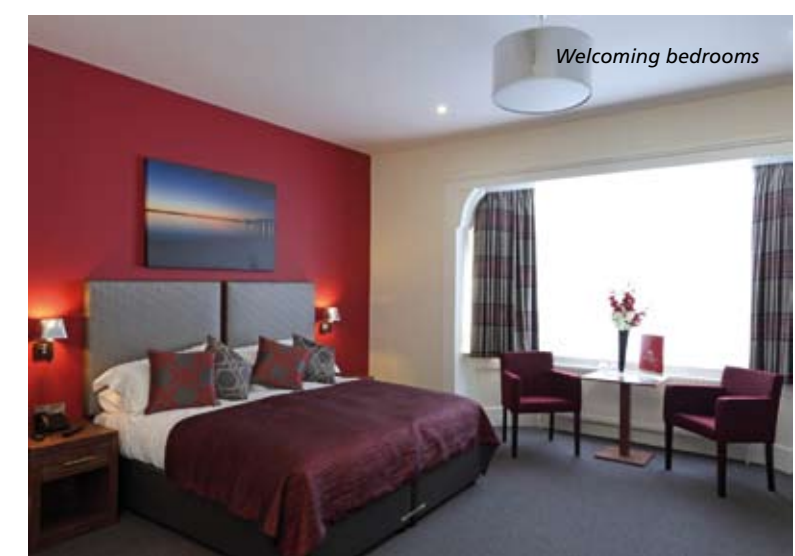
After such a delicious meal we retired to our room happy, content and feeling like life couldn't get any better.

A hearty full English breakfast the following morning simply confirmed my belief I had found a little piece of heaven.

Chris said: "When we were renovating the hotel we wanted to create something special, something with the wow factor. Hopefully we've managed to achieve that."

FACTFILE

- Valentine's Night menu: £29.50 per person. Double or twin room from £95 to £147; family room from £125 to £207
- The New Beehive Hotel, 53 Cliff Drive, Canford Cliffs, Poole, Dorset, BH13 7JF
- Hotel bookings: 01202 701531; restaurant bookings: 01202 701941
- Email: info@thenewbeehive.co.uk; www.thenewbeehive.co.uk



Welcoming bedrooms



There are great coastal views